

EXHIBITIONS & DISPLAYS



IDEAS · CONCEPTS · SOLUTIONS

info@colouritin.co.uk www.colouritin.co.uk

EXHIBITIONS & DISPLAYS

The **Exhibitions & Displays** range offers a complete solution for all types of indoor and outdoor events, promotions, trade shows and exhibitions.

A combination of dye-sublimation and latex printing techniques are used across the range to ensure the best possible finish for every product.

All fabric products are fire retardant and meet B1 and M1 safety standards.

CONTENTS

- 03. DISPLAY STANDS
- 07. BACKDROPS
- 12. ACCESSORIES
- 13. BOOTHS
- 15. TABLES & FURNITURE
- 20. TABLE COVERS
- 22. WALL, FLOOR & LIGHT BOXES
- 24. BARRIER COVERS
- 25. GAZEBOs
- 27. POP OUT BANNERS
- 29. FLAGS
- 32. RAW FABRIC
- 34. PVC BANNERS
- 35. BANNERS STANDS & POSTERS

DISPLAY STANDS

Display Stands consist of a strong, lightweight, aluminium frame and a stretchy printed fabric cover.

The aluminium frame features a simple 'click together' mechanism and each part is numbered for quick, straight forward assembly. The cover is printed on the front and reverse as standard, and fits snugly over the frame. It is washable, and extra covers can be ordered separately.

These display stands give a superior presence at exhibitions and are ideal for permanent indoor office or studio props.



Display Stand frames utilise a simple 'click together' mechanism.



Each part is numbered for easy identification and quick assembly.



All **Display Stands** are supplied with a carry bag for easy transportation and storage.



POP UP STAND

2.3 x 0.9m

Exact dimensions (mm)

2270(h) x 930(w)

260gsm Stretch fabric

Frame + graphic **£299**

Graphic only **£165**

LITERATURE STAND

1.5 x 0.4m

Exact dimensions (mm)
1540(h) x 360(w)
260gsm Stretch fabric
Tools required for assembly

Frame + graphic **£189**
Graphic only **£125**

Includes two literature baskets to hold A4 landscape or portrait documents.



SIGNAGE STAND

2.0 x 0.9m

Exact dimensions (mm)
2000(h) x 850(w)
260gsm Stretch fabric

Frame + graphic **£289**
Graphic only **£140**





MEDIA STAND

2.2 x 0.6m

Exact dimensions (mm)
2220(h) x 595(w)
260gsm Stretch fabric
Tablet and TV not included
Tools required for assembly

Frame + graphic **£329**

Graphic only **£182**

The media stand includes a TV bracket to hold a 26-32" flat-screen TV, a tablet holder and two literature baskets to hold A4 landscape or portrait documents.

TABLET STAND

1.3 x 0.4m

Exact dimensions (mm)
1290(h) x 440(w)
260gsm Stretch fabric
Tablet not included
Tools required for assembly

Frame + graphic **£199**

Graphic only **£115**



BACKDROPS

Backdrops are made up of the same components as display stands but offer a much larger display area.

They are perfect for defining an exhibition area, or to section off a large room. They use one continuous graphic which means they completely eliminate the problem of visible join lines commonly encountered on the traditional multi-panel exhibition backdrops.

Both the front and the reverse of the backdrops are printed, giving more room for a promotional message and increasing their functionality.

All backdrops are supplied with a carry bag for easy transportation and storage.



MEDIUM CURVE

2.3 x 2.5m

Exact dimensions (mm)

2300(h) x 2480(w)

260gsm Stretch fabric

Frame + graphic **£529**

Graphic only **£448**



LARGE CURVE

2.3 x 3m

Exact dimensions (mm)

2300(h) x 2990(w)

260gsm Stretch fabric

Frame + graphic **£579**

Graphic only **£482**





MINI STRAIGHT

2.3 x 1.8m

Exact dimensions (mm)

2270(h) x 1800(w)

260gsm Stretch fabric

Frame + graphic **£379**

Graphic only **£299**

LARGE STRAIGHT

2.3 x 2.9m

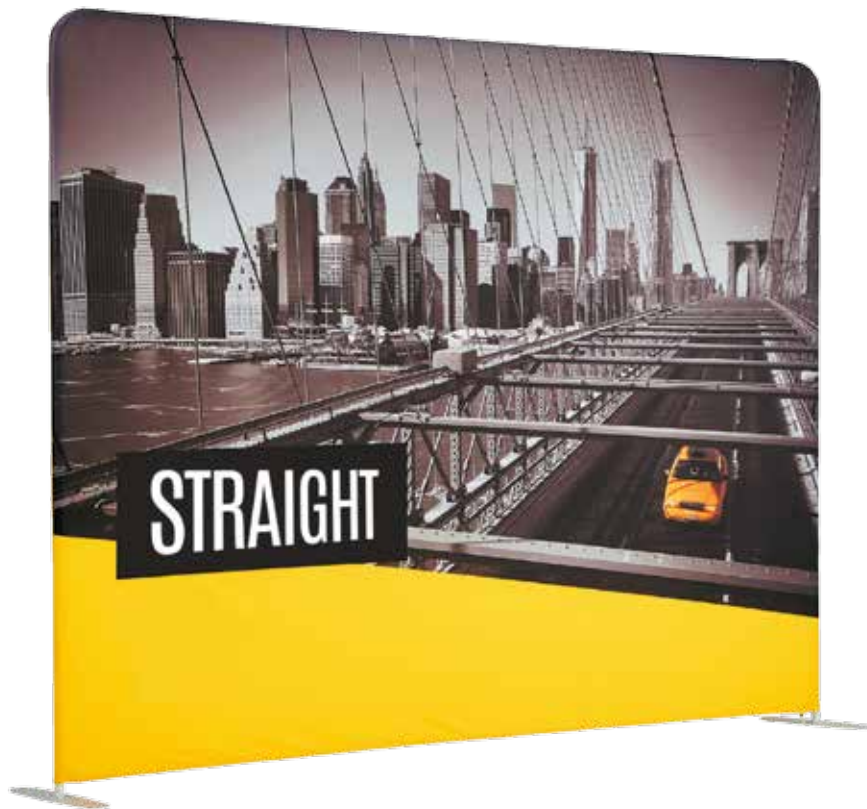
Exact dimensions (mm)

2270(h) x 2900(w)

260gsm Stretch fabric

Frame + graphic **£619**

Graphic only **£482**





STRAIGHT

XL STRAIGHT

2.3 x 4.6m

Exact dimensions (mm)

2270(h) x 4572(w)

260gsm Stretch fabric

Frame + graphic **£869**

Graphic only **£682**

ACCESSORIES



EXTRA COVERS

Additional fabric covers are available to purchase for every product, excluding footstools and pop out banners, where the graphics are permanently attached to the frame.



LIGHTS

12W LED flood light for use with fabric display stands. Supplied with a C-shaped clamp for easy attachment and a 3m power lead.

Suitable for use with all products on pages 4-15.

£84



CONNECTION KIT

Join multiple straight backdrops together to form L-shaped or U-shaped displays with the 90° kit, or longer, straight displays with the 180° kit.

Suitable for use with any straight backdrop.

£18



BRIDGE

Attach a bridge to a straight backdrop to create an interactive display stand. Bridge measures 2300(h) x 800(w) x 1800(d) mm.

Supplied with a TV bracket and two feet. Suitable for use with any straight backdrop.

£415

BOOTHS

Brand new in the UK. Make a private meeting space in an office area or divide up open plan rooms with these huge **Booths**.

Fabric Booths are perfect for exhibitions – just rent a ‘space only’ stand, and use the booth to create an eye-catching one-piece, ready formed stand, printed on all sides.

Using the same construction method as display stands and backdrops, these booths can be quickly assembled in exhibition areas or open plan offices.

Choose the ‘C-shaped’ booth, or the sculptured, sloped booth.

All booths are supplied with a carry bag for easy transportation and storage.

C-SHAPED BOOTH

2.3 x 3.0m

Exact dimensions (mm)
2300(h) x 2970(w) x 2000(d)
260gsm Stretch fabric

Frame + graphic **£1,195**

Graphic only **£745**



SLOPED BOOTH

2.3 x 3.2m

Exact dimensions (mm)

2300(h) x 3200(w) x 2000(d)

260gsm Stretch fabric

Frame + graphic **£1,195**

Graphic only **£745**



TABLES & FURNITURE

When exhibiting or running a promotion, it's essential to have a surface to rest a laptop, paperwork, pens or drinks on. Fabric **Tables** provide that useful platform whilst promoting a brand, product or service at the same time.

Seating cubes and **Beanbags** provide fun, informal seating areas at exhibitions or around the office.

Acoustic **Screen covers** can be slipped over free-standing room partitions to help reduce background noise.



KIOSK

2.3 x 1.0m

Exact dimensions (mm)

Table: 960(h) x 960(w) x 500(d)

Header height 2300(h)

260gsm Stretch fabric

Available with or without the header

Frame + graphic **£329**

Graphic only **£148**



COCKTAIL TABLE

1.1 x 0.8m

Exact dimensions (mm)
1100(h) x 800(diameter)
260gsm Stretch fabric

Frame + graphic **£325**

Graphic only **£148**



Maximum table load:
50kg evenly distributed.

SLIM COCKTAIL TABLE

1.1 x 0.6m

Exact dimensions (mm)
1140(h) x 600(diameter)
260gsm Stretch fabric

Frame + graphic **£249**

Graphic only **£132**



SCREEN COVER

1.5/1.8 x 1.5m

Exact dimensions (mm)

1500 or 1800(h) x 1500(w) x 45(d)

270gsm acoustic

Also available in 300gsm honeycomb

Graphic only from **£232**



FOLDING TABLE

0.9 x 0.9m

Exact dimensions (mm)

855(h) x 855(w) x 855(d)

260gsm Stretch fabric

Table folds flat

Frame + graphic **£215**

Graphic only **£139**



BEANBAG

1.3 x 1.3m

Exact dimensions (mm)

1300(h) x 1300(w)

260gsm Tent fabric

Beanbag + graphic **£149**

Graphic only **£99**



BAR STOOL

0.9 x 0.4m

Exact dimensions (mm)

910(h) x 400(w) x 510(d)

Seat height (mm): 630(h)

260gsm Stretch fabric

Can hold up 110kg

Stool + graphic **£159**

Graphic only **£67**



SEATING CUBE

0.5 x 0.5m

Exact dimensions (mm)
450(h) x 450(w) x 450(d)
260gsm Stretch fabric
Also available in 260gsm Tent
High density foam inner

Foam + graphic from **£199**

Graphic only from **£139**



FOOTSTOOL

0.4 x 0.4m

Exact dimensions (mm)
360(h) x 360(w) x 360(d)
260gsm Stretch fabric
Removable lid reveals a useful
storage area

Frame + graphic **£99**



TABLE COVERS

These standard sized table coverings are printed on 210gsm Display fabric. Printed in full colour, every inch can be personalised. Great for exhibitions, trade shows, school fairs and markets.

The **Table Runner** is designed to reach just above the floor either side of a 5ft or 6ft trestle table.

The **Tablecloths** are designed to reach to the floor at the front and sides of a standard 5ft or 6ft trestle table with a 30cm overhang at the back to allow for access to storage or for legs to fit behind.

TABLE RUNNER

1.0 x 2.0m

Exact dimensions (mm)

2000(h) x 1000(w)

Table not included

£89



6FT TABLECLOTH

1.8 x 3.2m

Exact dimensions (mm)

3280(h) x 1790(w)

To fit a 6ft trestle table:

1800(l) x 750(w) x 740(h)

Table not included

£279

See **Raw Fabric** on
page 32 for custom
size tablecloths.



5FT TABLECLOTH

1.8 x 3.0m

Exact dimensions (mm)

3000(h) x 1800(w)

To fit a 5ft trestle table:

1520(l) x 760(w) x 740(h)

Table not included

£229

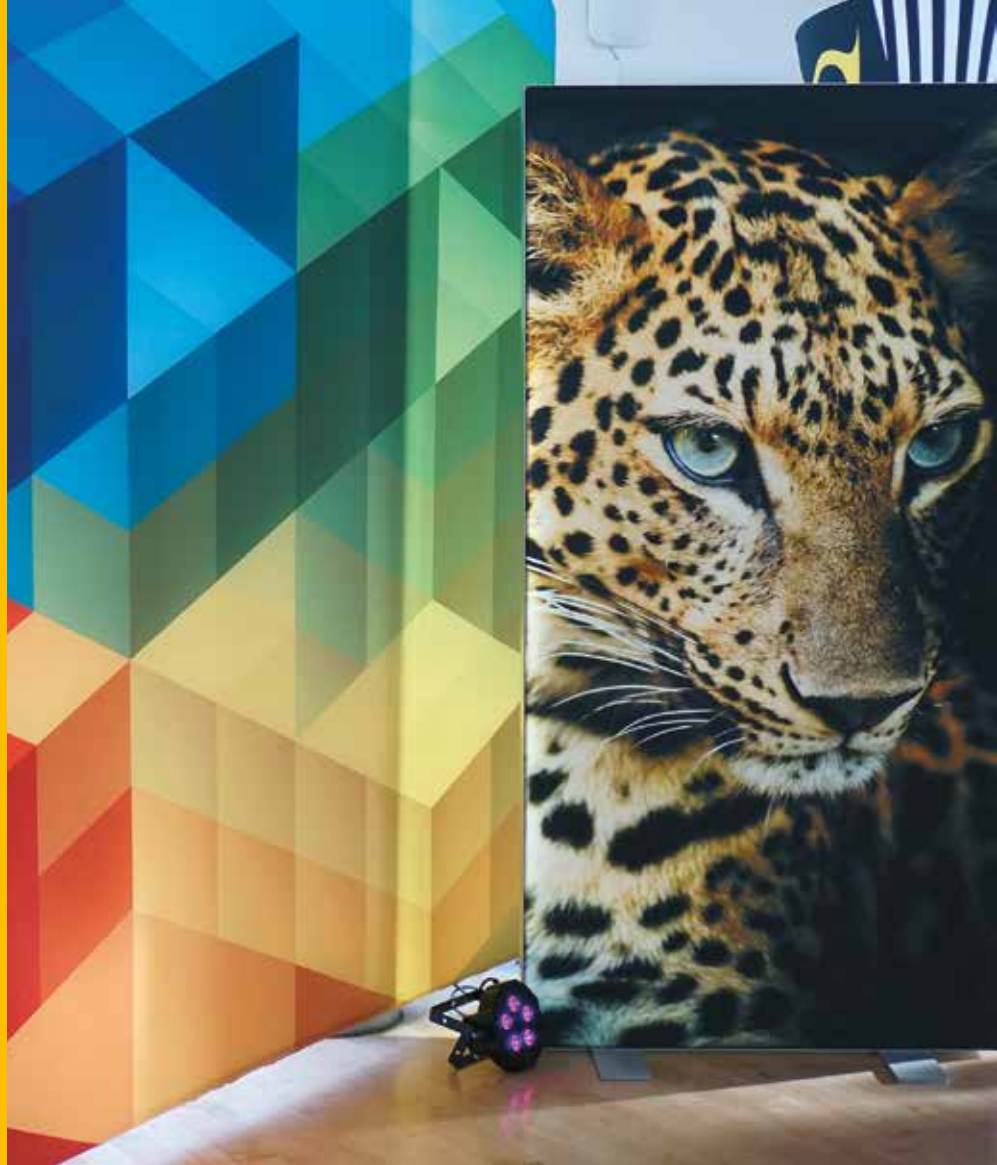


WALL, FLOOR & LIGHT BOXES

These fabric boxes feature a metal frame, into which a silicone edged fabric graphic can be attached. The graphic extends right to the edge of the frame - giving a large uninterrupted display area.

Wall boxes attach directly to a wall, and **Floor boxes** are free standing. **Lightboxes** feature a row of LED lights inside the frame which illuminates the image from behind.

Floor boxes and lightboxes are both double sided, so you can have a different graphic on each side.





LIGHTBOX

Various sizes available
165gsm backlit fabric
Double sided

Lightbox + two graphics
from **£1,752**



FLOOR BOX

Various sizes available
260gsm Stretch fabric
Double sided

Frame + two graphics
from **£357**



WALL BOX

Various sizes available
260gsm Stretch fabric

Frame + graphic
from **£114**

BARRIER COVERS

These **Barrier Covers** allow you to brand any event or place of work whilst maintaining safety procedures. Printed in full colour, every inch can be personalised.

Great for sporting events, building sites, music events and festivals.

Printed in full colour, one side on 100gsm Vent fabric.

Includes:

- Eyelets around the perimeter

Optional extras:

- Cable ties

BARRIER COVERS

1.0 x 2.3m

Exact dimensions (mm)

1000(h) x 2270(w)

Front and reverse coverage

Crowd barrier not included

£115



1.8 x 3.2m

Exact dimensions (mm)

1800(h) x 3200(w)

Front coverage only

Site barrier not included

£185



See **Raw Fabric** on page 32 for custom size barrier covers.

GAZEBOS

Gazebos are a versatile product. They provide abundant promotional space as well as shelter at outdoor events.

The waterproof 260gsm Tent fabric canopy, back wall and side walls can all be personalised to ensure maximum impact.

Includes:

- Aluminium frame
- Printed canopy
- Carry bag

Optional extras:

- Full back wall, with single or double-sided print
- Half side wall, with single or double-sided print



The gazebo frame contracts to a compact size when not in use.



To erect, simply pull the four legs outwards - the frame will build itself.



Pop the canopy on top of the frame before it is fully stretched.



Arrange the four corners of the canopy over the frame securely.



GAZEBO

3.0 x 3.0m

Exact dimensions (mm)

Various(h) x 3000(w) x 3000(d)

Gazebo can be used at different heights

Structure height range: 3.2-3.5m,

Headroom range: 1.89-2.19m

Frame + canopy **£1,169**

Canopy only **£582**

Canopy only **£99**

Canopy only **£165**

POP OUT BANNERS

These **Pop Out Banners** are easy to put up with their 'pop out' construction method. Just release it from the carry bag and watch as it assembles itself in an instant.

Great for outdoor or indoor events. Choose between the 100gsm Flag fabric or the thicker 210gsm Display fabric.

Includes:

- 2 single sided graphic panels attached to a spring frame
- Carry bag
- Eyelet tabs
- 6 x ground pegs

TALL POP OUT

1.8 x 1.0m

Exact dimensions (mm)

1840(h) x 1050(w)

Also available in 210gsm Display fabric

Frame + graphic
from **£169**



LOW POP OUT

1.0 x 2.0m

Exact dimensions (mm)

1020(h) x 2050(w)

Also available in 210gsm Display fabric

Frame + graphic from **£169**



The compact carry bag is flat for easy storage and transportation.



The supplied pegs can be used to secure the banner to a soft surface.



Neatly store the pegs in a purpose built side pocket on the carry bag.



FLAGS

Choose the right **Flag** for the promotional message — or opt for one of the **Backpack Flags** to take messages on the move.

Standing Flags Include:

- Single sided graphic printed on 100gsm Flag fabric
- Metal cross base
- Flag pole
- Carry bag

Optional extras:

- Double-sided graphic with blackout divider to restrict show-through
- Ground spike base
- 'Rubber ring' water base
- Wall mounted base
- Water filled base
- Square base

CURVE FLAG

3.7m

Exact dimensions (mm)

Graphic 3000(h) x 700(w)

Assembled height 3720

100gsm Flag fabric

Also available in 100gsm Vent fabric

Frame + graphic **£139**

Graphic only **£75**

These standing flags are suitable outdoors in winds of up to 15mph.



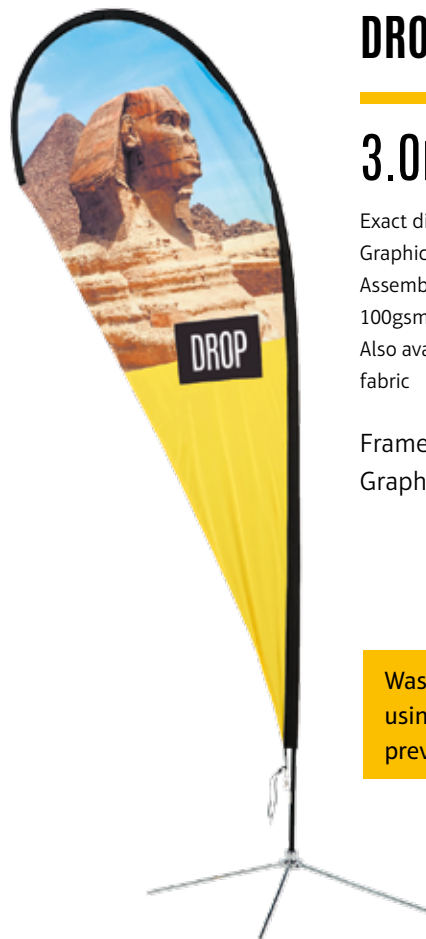


STRAIGHT FLAG

3.7m

Exact dimensions (mm)
Graphic 2500(h) x 750(w)
Assembled height 3730
100gsm Flag fabric
Also available in 100gsm Vent fabric

Frame + graphic **£119**
Graphic only **£75**



DROP FLAG

3.0m

Exact dimensions (mm)
Graphic 2400(h) x 1040(w)
Assembled height 2960
100gsm Flag fabric
Also available in 100gsm Vent fabric

Frame + graphic **£119**
Graphic only **£75**

Wash flags at 30° before using in wet weather to prevent the ink running.



CURVED BACKPACK FLAG

1.2m

Exact dimensions (mm)
Graphic 1250(h) x 670(w)
100gsm Flag fabric
Also available in 100gsm Vent
fabric

Frame + graphic **£109**
Graphic only **£57**

Backpack flags include
a single sided graphic
on 100gsm knitted
polyester, a lightweight
polyurethane leather
backpack and pole.



STRAIGHT BACKPACK FLAG

1.2m

Exact dimensions (mm)
Graphic 1250(h) x 400(w)
100gsm Flag fabric
Also available in 100gsm Vent
fabric

Frame + graphic **£119**
Graphic only **£65**

RAW FABRIC

The fabric substrates are also available in a 'raw' (unfinished) state.

These fabrics can be purchased by the metre and can be used for a number of different applications.

You can use **Raw Fabric** to create your own curtains, table drapes, seating and cushion covers, beanbags, deck chairs, street furniture - anything you want!

Optional extras:

- Stitched seams
- Eyelets
- Silicone edging





DISPLAY FABRIC

210gsm polyester display fabric. Low show-through. Use for indoor retail and showroom promotional displays and tablecloths.

£36.00 per m²



STRETCH FABRIC

260gsm stretch material. Medium show-through. Use for tensioned display stands and fitted tablecloths.

£36.00 per m²



FLAG FABRIC

100gsm knitted polyester. High show-through. Use for indoor and outdoor flags, sheer curtains and drapes.

£28.00 per m²



VENT FABRIC

100gsm vent fabric. Features holes to allow wind to pass through. Use for outdoor flags, building wraps and street furniture.

£28.00 per m²



TENT FABRIC

260gsm waterproof fabric. Low show-through. Use for gazebos, beanbags, outdoor furniture and deck chairs.

£36.00 per m²



BACKLIT FABRIC

165gsm PU coated polyester. Low show-through. Best used in lightboxes and spaces where it will be well lit from behind.

£48.00 per m²



ACOUSTIC FABRIC

270gsm textured acoustic polyester. Low show-through. Use for room partition and internal wall covers to reduce noise.

£30.00 per m²



HONEYCOMB FABRIC

300gsm cube textured acoustic polyester. Low show-through. Use for room partition and internal wall covers to reduce noise.

£57.00 per m²

PVC BANNERS

PVC Banners are printed on a 440gsm PVC substrate using latex inks which gives them a scratch, UV and water resistant finish.

The banners have welded hems and can be eyeleted — perfect for long-term outdoor promotions.

Available in a range of sizes.

Optional extras:

- Eyelets
- Cable ties



BANNERS

These portable **Roller Banners** are ideal for exhibitions and permanent indoor displays.

Choose either an indoor or a waterproof outdoor version depending on where it will be used.

POSTERS

Compliment your exhibition area with **Posters**. Various sizes and styles available. Ask us which ones will work best for you.





IDEAS · CONCEPTS · SOLUTIONS

Visual marketing and brand communication specialists

We differ from traditional agencies in our approach to solving problems. Creative but practical design is at the heart of what we do and our experience ensures it can be reproduced faithfully across all applications, ensuring your brand hits the spot. Whether you are just starting out, developing your brand or working as part of marketing and sales teams in large organisations, we have the skills to help you reach your clients.

Whatever your idea of a creative agency is, we promise no red braces,
no beanbags and definitely NO Mad Men or Women!!



IDEAS · CONCEPTS · SOLUTIONS

info@colouritin.co.uk
www.colouritin.co.uk